

WASF2 Antibody (Center)
Affinity Purified Rabbit Polyclonal Antibody (Pab)
Catalog # AP14540c

Specification

WASF2 Antibody (Center) - Product Information

Application	WB,E
Primary Accession	O9Y6W5
Other Accession	O8BH43 , A2VDK6 , NP_008921.1
Reactivity	Human
Predicted	Bovine, Mouse
Host	Rabbit
Clonality	Polyclonal
Isotype	Rabbit IgG
Calculated MW	54284
Antigen Region	162-190

WASF2 Antibody (Center) - Additional Information

Gene ID 10163

Other Names

Wiskott-Aldrich syndrome protein family member 2, WASP family protein member 2, Protein WAVE-2, Verprolin homology domain-containing protein 2, WASF2, WAVE2

Target/Specificity

This WASF2 antibody is generated from rabbits immunized with a KLH conjugated synthetic peptide between 162-190 amino acids from the Central region of human WASF2.

Dilution

WB~~1:1000

E~~Use at an assay dependent concentration.

Format

Purified polyclonal antibody supplied in PBS with 0.09% (W/V) sodium azide. This antibody is purified through a protein A column, followed by peptide affinity purification.

Storage

Maintain refrigerated at 2-8°C for up to 2 weeks. For long term storage store at -20°C in small aliquots to prevent freeze-thaw cycles.

Precautions

WASF2 Antibody (Center) is for research use only and not for use in diagnostic or therapeutic procedures.

WASF2 Antibody (Center) - Protein Information

Name WASF2 ([HGNC:12733](#))

Function Downstream effector molecule involved in the transmission of signals from tyrosine kinase receptors and small GTPases to the actin cytoskeleton. Promotes formation of actin filaments. Part of the WAVE complex that regulates lamellipodia formation. The WAVE complex regulates actin filament reorganization via its interaction with the Arp2/3 complex.

Cellular Location

Cytoplasm, cytoskeleton. Cell projection, lamellipodium. Basolateral cell membrane. Note=At the interface between the lamellipodial actin meshwork and the membrane.

Tissue Location

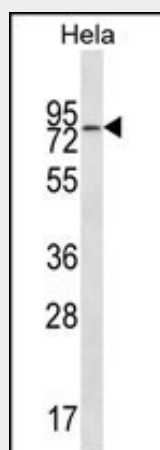
Expressed in all tissues with strongest expression in placenta, lung, and peripheral blood leukocytes, but not in skeletal muscle.

WASF2 Antibody (Center) - Protocols

Provided below are standard protocols that you may find useful for product applications.

- [Western Blot](#)
- [Blocking Peptides](#)
- [Dot Blot](#)
- [Immunohistochemistry](#)
- [Immunofluorescence](#)
- [Immunoprecipitation](#)
- [Flow Cytometry](#)
- [Cell Culture](#)

WASF2 Antibody (Center) - Images



WASF2 Antibody (Center) (Cat. #AP14540c) western blot analysis in HeLa cell line lysates (35ug/lane). This demonstrates the WASF2 antibody detected the WASF2 protein (arrow).

WASF2 Antibody (Center) - Background

This gene encodes a member of the Wiskott-Aldrich syndrome protein family. The gene product is a protein that forms a multiprotein complex that links receptor kinases and actin. Binding to actin occurs through a C-terminal verprolin homology domain in all family members. The multiprotein complex serves to transduce signals that involve changes in cell shape, motility or function. The published map location (PMID:10381382) has been changed based

on recent genomic sequence comparisons, which indicate that the expressed gene is located on chromosome 1, and a pseudogene may be located on chromosome X.

WASF2 Antibody (Center) - References

Takahashi, K., et al. Cell. Signal. 22(3):510-518(2010)

Lebensohn, A.M., et al. Mol. Cell 36(3):512-524(2009)

Cai, X., et al. Lung Cancer 65(3):299-305(2009)

Morimura, S., et al. Biochem. Biophys. Res. Commun. 382(3):614-619(2009)

Takahashi, K., et al. Cell. Signal. 21(5):695-703(2009)